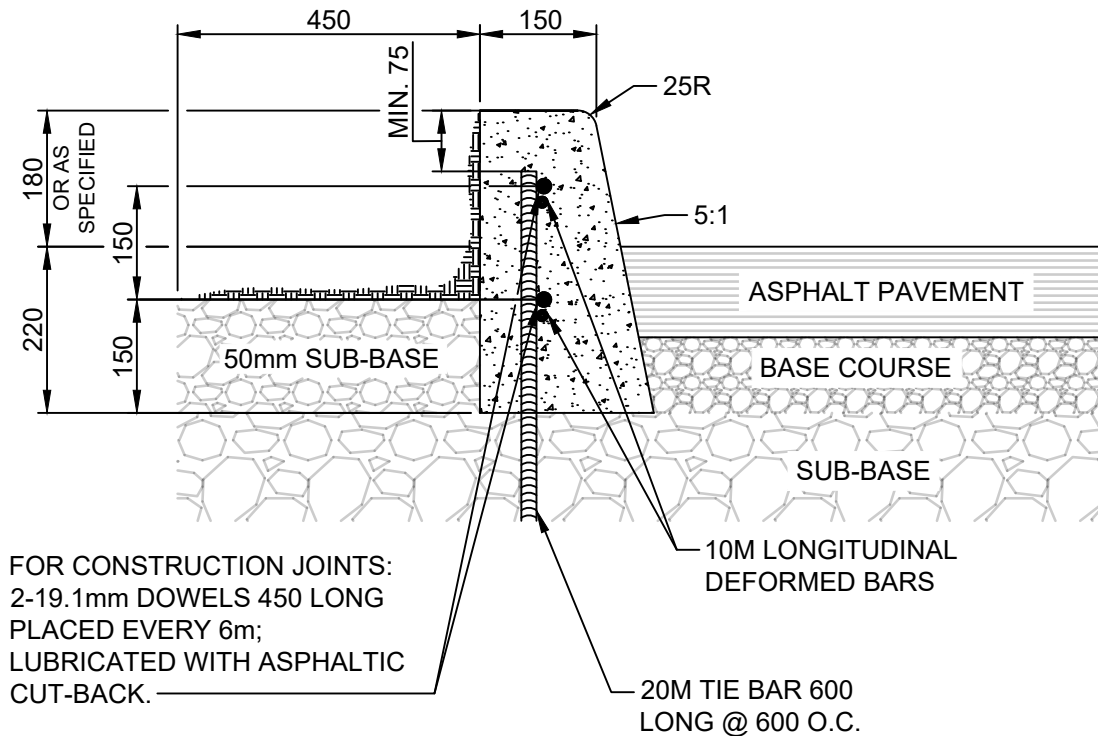


# APPENDIX I: CURB DETAILS



NOTES:

1. TRANSVERSE SAW CUT EVERY 3m OR AT PAVEMENT JOINTS
2. TRANSVERSE SAW CUTS ARE TO BE A MAXIMUM DEPTH OF 25mm

DIMENSIONS IN MILLIMETRES



THE CITY OF WINNIPEG  
PUBLIC WORKS DEPARTMENT

Reference Spec. No.  
CW 3325

BARRIER CURB FOR  
ASPHALT PAVEMENT

Revisions			
No.	Date	Description	By
Designed By: A.G.		Drawn By: R.B.	Scale : <b>N.T.S</b>
Checked By: B.K.		Date: 2024-10-01	Drawing No.
Approved: PAVEMENT MANAGEMENT BRANCH			<b>SD-200A</b>